



TeamConnect Ceiling Medium

Ceiling microphone array

PDF export of the original HTML manual



Contents

1. Product Overview.....	3
Delivery includes.....	3
Front and back.....	6
Connectors and controls.....	8
Accessories.....	10
2. Planning and installation.....	12
Connecting to a network.....	12
Outputting analog audio signals.....	13
Outputting digital audio signals.....	15
Planning the installation.....	17
3. Installation and startup.....	21
General notes.....	21
Variant 1: installed flush in a dropped/coffered ceiling.....	23
Variant 2: installed flush with Ceiling Tile Element in a dropped/coffered ceiling.....	27
Variant 3: mounted directly below the ceiling.....	30
Variant 4: suspended from the ceiling.....	33
Mounting the TeamConnect Ceiling Medium on a VESA mount.....	37
Configuring the TeamConnect Ceiling Medium with the Sennheiser Control Cockpit.....	38
Configuring the TeamConnect Ceiling Medium with a media control system.....	43
4. Specifications.....	44
Specifications.....	44
Cleaning and maintenance.....	47
5. Regulatory information.....	48
6. Contact.....	52



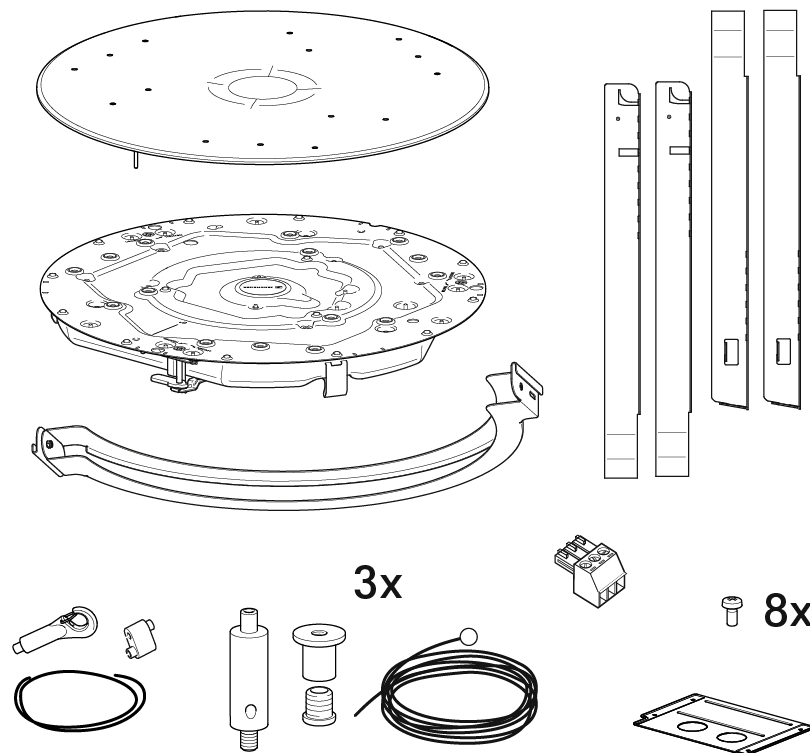
1. Product Overview

Information about the scope of delivery, the device's structure and connections, and available accessories.

Delivery includes

The TeamConnect Ceiling Medium is available in the following variants:

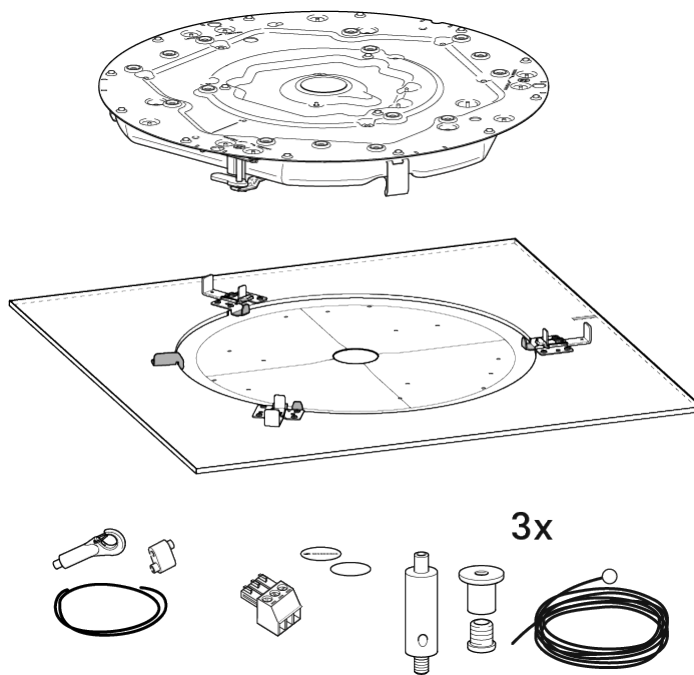
Ceiling Mic Flush Mount Kit:



- TCC M-F-W: white version, article no. 700170
- TCC M-F-B: black version, article no. 700234

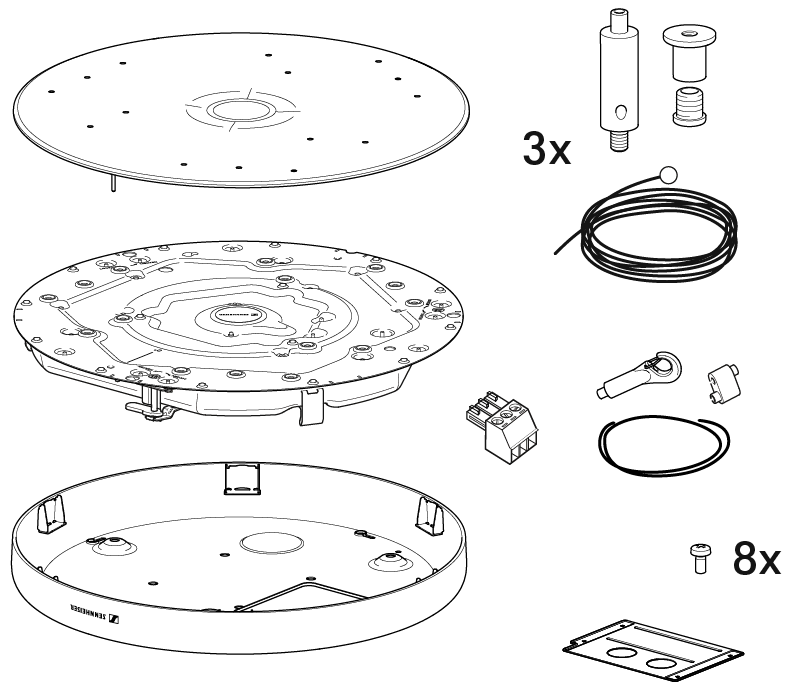
- TeamConnect Ceiling M ceiling microphone
- Ceiling flush mount kit
- Front panel
- Chicago junction box cover plate
- Ceiling suspension kit
- Installation rope
- 3-pin Phoenix connector (3.81)
- 8 × M3×6 fillister head screws

Ceiling Tile Kit:



- TCC M CT-W: 60 cm grid ceiling set, art. no. 700517
- TCC M CT-W 2FT: 2 ft grid ceiling set, art. no. 700518
- TeamConnect Ceiling M ceiling microphone
- Ceiling Tile mounting plate
- Installation rope
- Ceiling suspension kit
- 3-pin Phoenix connector (3.81)

Ceiling Mic Housing Kit



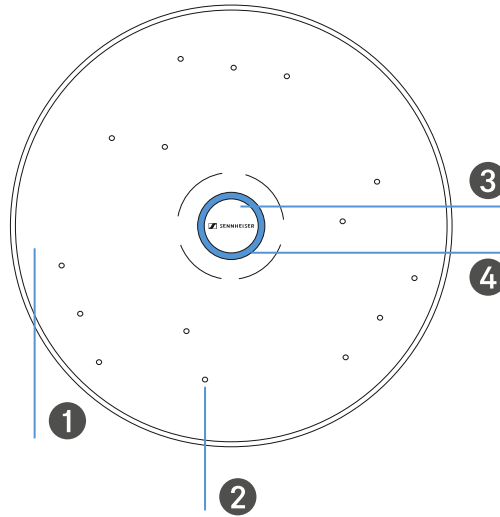
- **TCC M-S-W: white version, article no. 700294**
- **TCC M-S-B: black version, article no. 700295**

- TeamConnect Ceiling M ceiling microphone
- Design housing
- Front panel
- Chicago junction box cover plate
- Ceiling suspension kit
- Installation rope
- 3-pin Phoenix connector (3.81)
- 8 × M3×6 fillister head screws



Front and back

Front



1 Front panel

2 Microphone capsules (15×)

3 Interchangeable logo plate

See [Replacing the logo plate](#)

4 Status LED ring

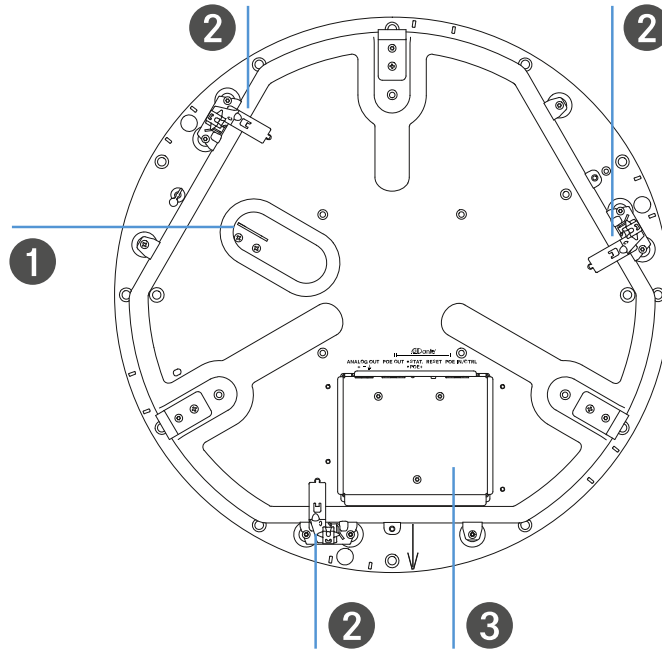
Green: device is switched on (factory setting, can be changed)

Red: device is muted (factory setting, can be changed)

Blue: custom color, can be customized



Back



1 Hook for safety wire

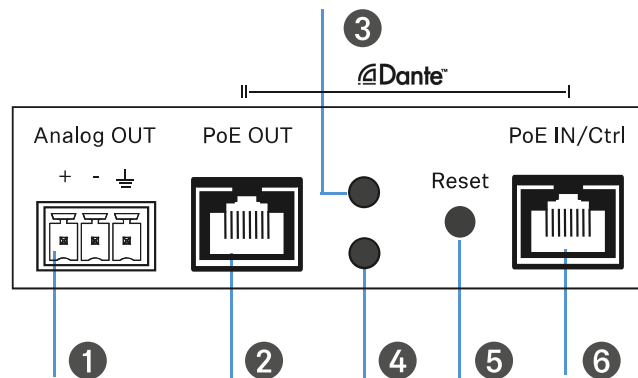
2 Clamps for mounting in ceiling housing or design housing.

3 Cable compartment with connection sockets

See [Connectors and controls](#)



Connectors and controls



1 Analog OUT

Analog audio output

3-pin socket

Suitable for Phoenix Contact MCVW 1.5-3-ST-3.81

See [Outputting analog audio signals](#)

2 PoE OUT

RJ-45 socket

Dante II

Daisy chaining

See [Outputting digital audio signals](#)

3 Daisy chain status LED

Flashing: too many devices or insufficient power supply

Steady light: daisy chain device connected

4 LED PoE (Power over Ethernet) supply status

Steady light: PoE connected / 30–60 W connected

5 Reset button

To reset to factory settings, press and hold the reset button for at least 5 seconds.



6 PoE IN / CTRL

RJ-45 socket

Dante I

Power supply via PoE

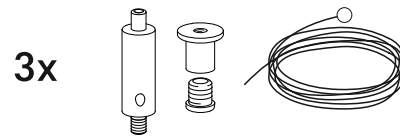
Configuration via the software or a media control system

See [Connecting to a network](#)



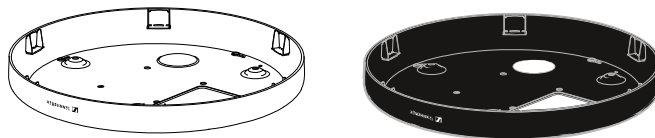
Accessories

Ceiling suspension kit



TCC M SK | Ceiling microphone M suspension kit | Article no. 700237

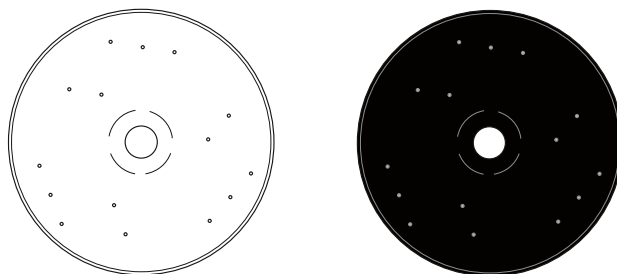
Ceiling microphone housing



TCC M H-W | Ceiling microphone housing, white | Article no. 700238

TCC M H-B | Ceiling microphone housing, black | Article no. 700239

Front panel

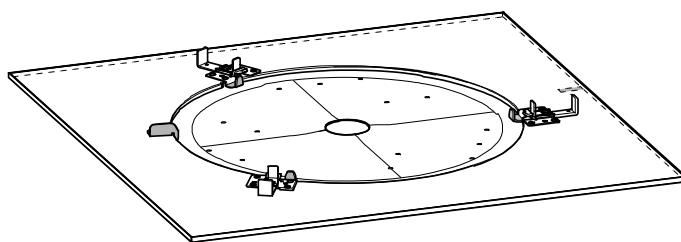


TCC M SFP | Replacement front panel, white | Article no. 700235

TCC M SFP | Replacement front panel, black | Article no. 700236



Square front panel



TCC M CTFP-W | Square front panel 60 cm | art. no. 700515

TCC M CTFP-W 2FT | Square front panel 2 ft | art. no. 700516



2. Planning and installation

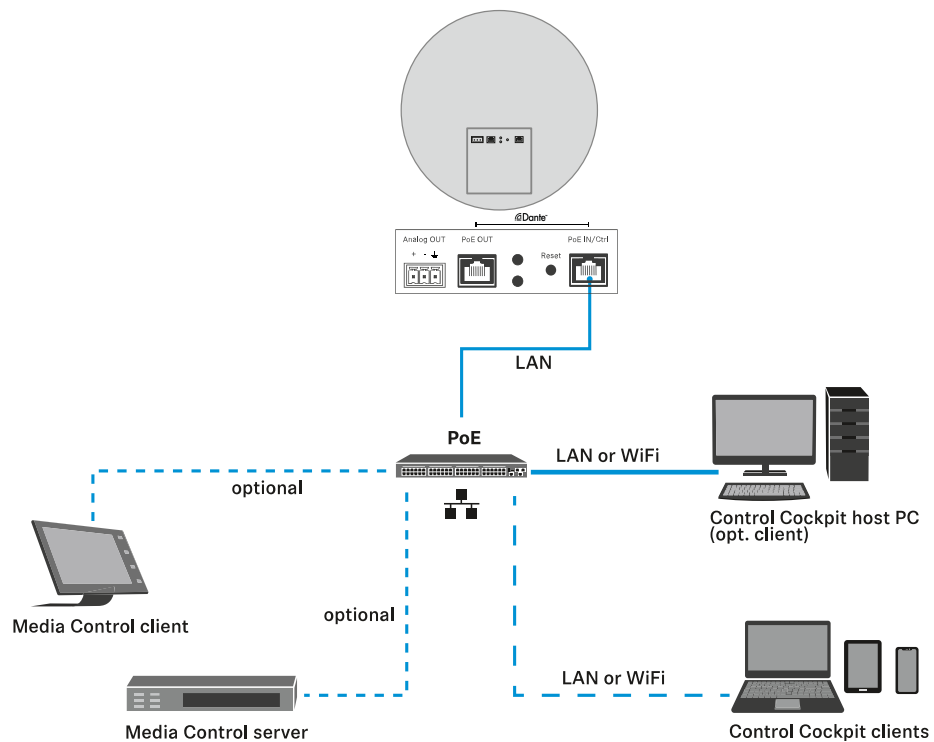
Information about connecting to a network, audio output and installation planning.

Connecting to a network

Power supply and configuration

The Ethernet PoE/Ctrl RJ-45 socket is used to both power the TeamConnect Ceiling Medium via Power over Ethernet and configure it using the Sennheiser Control Cockpit software (see [Configuring the TeamConnect Ceiling Medium with the Sennheiser Control Cockpit](#)). In your network you can either use a switch that provides PoE or a PoE injector.

i Use only shielded STP network cables that do not exceed an AWG value of 24.



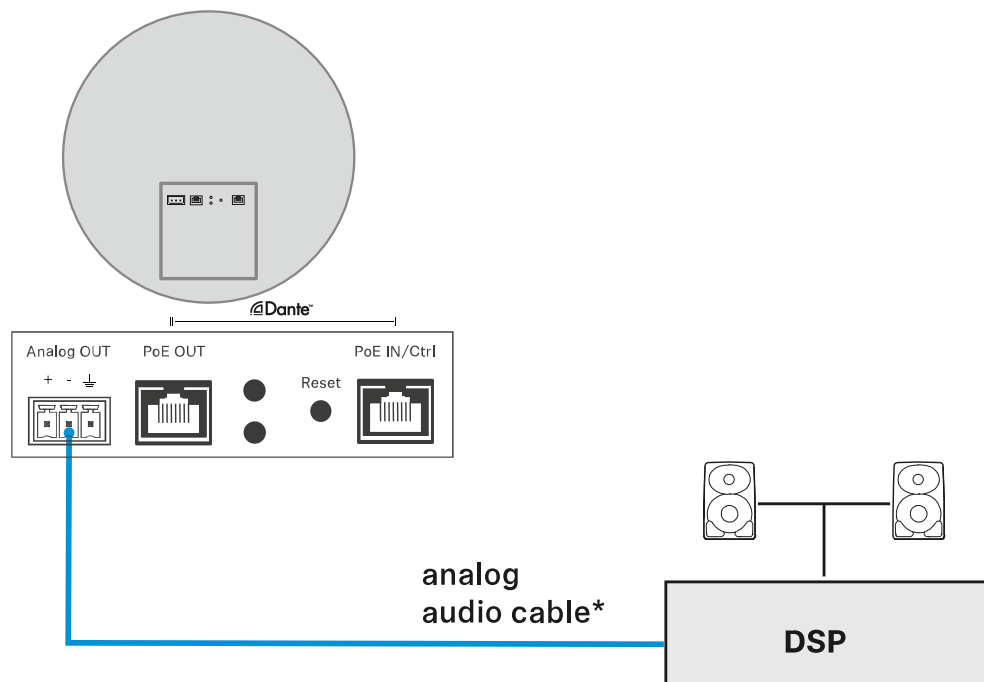


Outputting analog audio signals

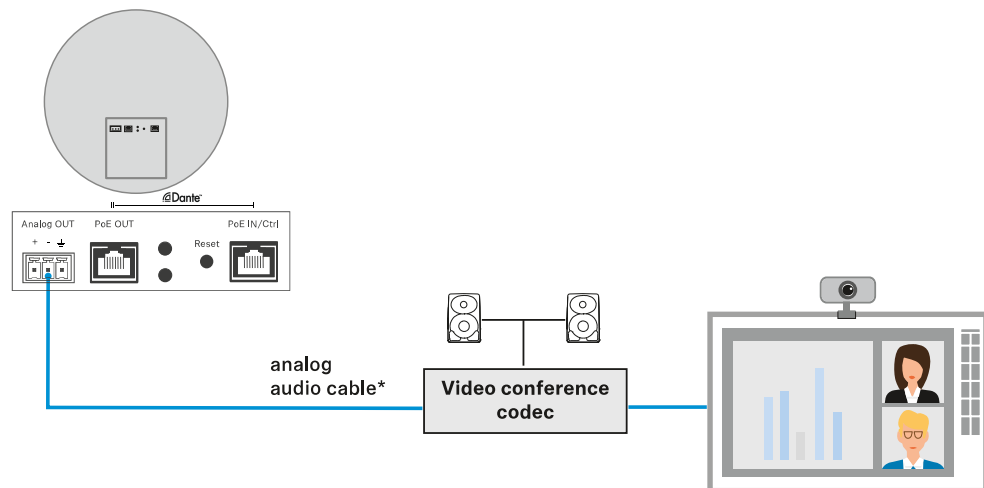
Use the Analog Out socket to output analog audio signals.

- i** *The analog audio cable is not included with delivery. Depending on the audio input of your DSP, the cable must connect 3-pin terminal to 3-pin XLR terminal or to jack.

Variant 1: output analog audio signal to a DSP

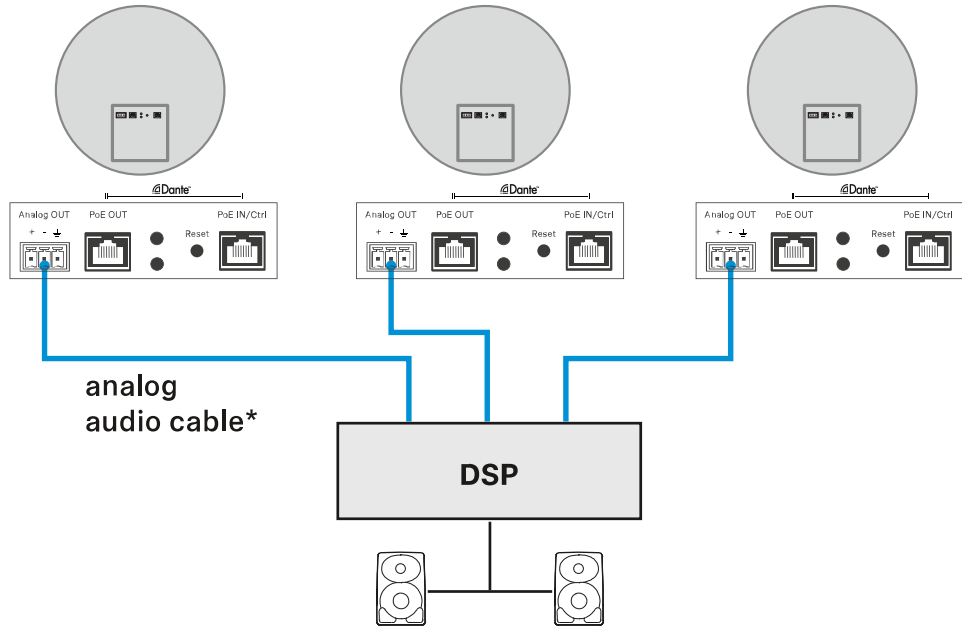


Variant 2: output analog audio signal to video conference codec





Variant 3: output analog audio signal from multiple ceiling microphones to a single DSP

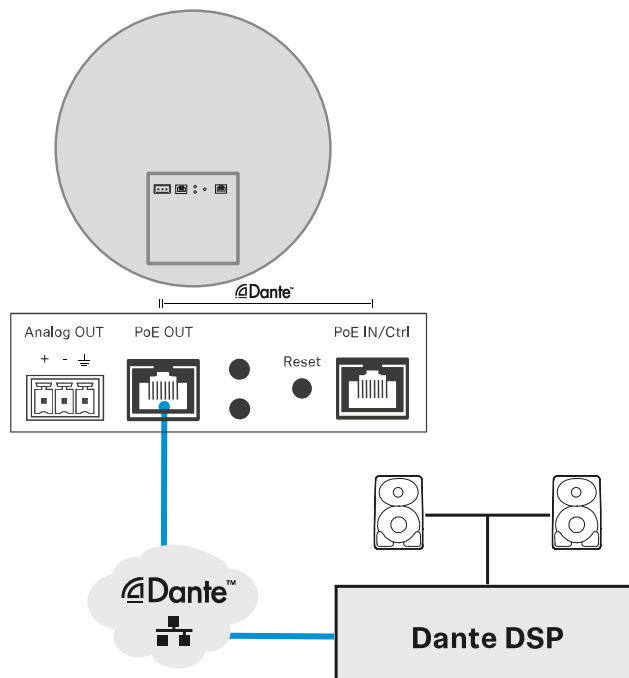




Outputting digital audio signals

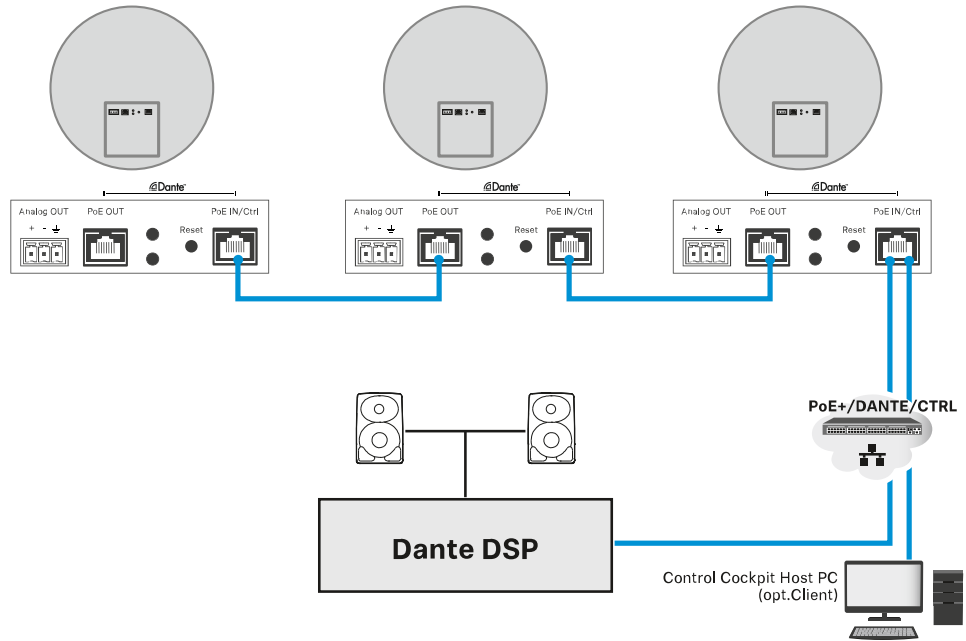
The Dante interface with two RJ-45 sockets is used for outputting digital audio signals. The interface supports redundant output and series connection of multiple ceiling microphones (switched mode). The mode is configured using the Dante Domain Manager or Dante Controller from Audinate (www.audinate.com).

Variant 1: output digital audio signal to one Dante network





Variant 2: output digital audio signals from multiple ceiling microphones connected in series to one Dante network



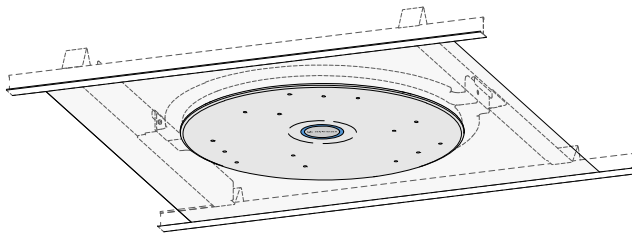


Planning the installation

Possible installation variants

- i** Detailed installation instructions can be found in the section “Installation and startup.”

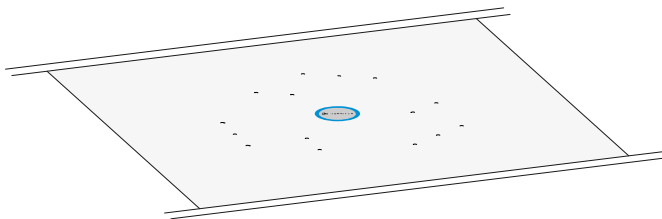
Variant 1: installed flush in a dropped/coffered ceiling



Ceiling microphone mounting kit: TCC M-F-W (white) or TCC M-F-B (black)

- See [Variant 1: installed flush in a dropped/coffered ceiling](#)

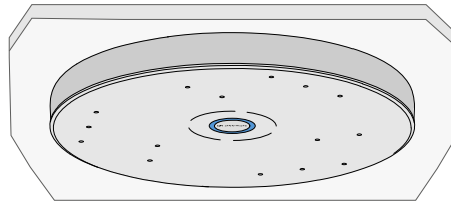
Variant 2: installed flush with the Ceiling Tile panel in a dropped/coffered ceiling



Ceiling microphone mounting kit: TCC M CTFP-W or TCC M CT-W 2FT

- See [Variant 2: installed flush with Ceiling Tile Element in a dropped/coffered ceiling](#)

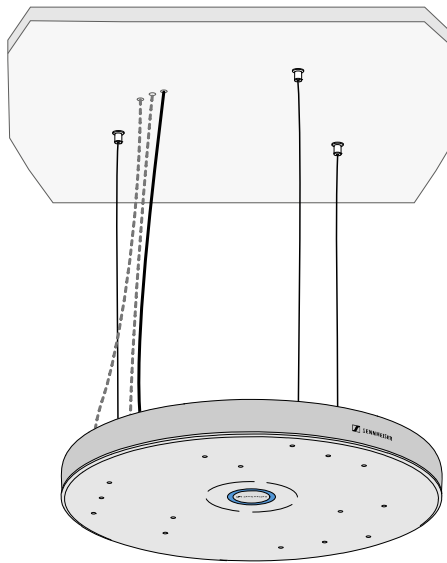
Variant 3: mounted directly below the ceiling



Ceiling microphone housing kit: TCC M-S-W (white) or TCC M-S-B (black)

- See [Variant 3: mounted directly below the ceiling](#)

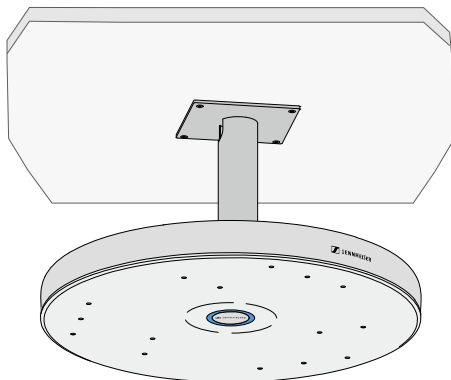
Variant 4: suspended from the ceiling



Accessories required:

- See [Variant 4: suspended from the ceiling](#)

VESA mount



Installation information:

- See [Mounting the TeamConnect Ceiling Medium on a VESA mount](#)

Adapting the installation height

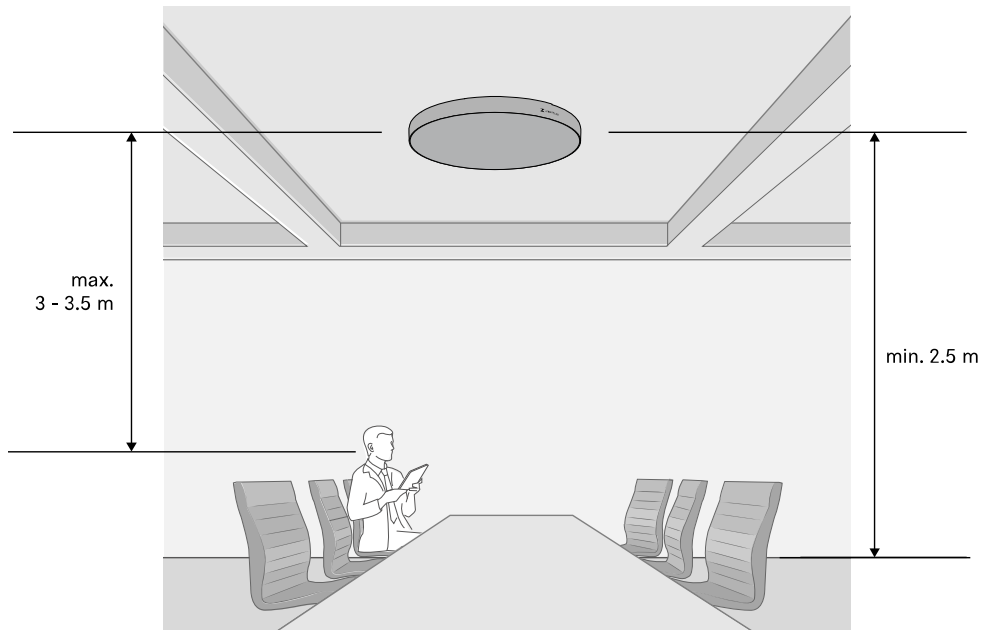
- i** Observe the following minimum and maximum distances when installing the TeamConnect Ceiling Medium.

The recommended maximum distance from the speaker to the TeamConnect Ceiling Medium is 3 to 3.5 m.

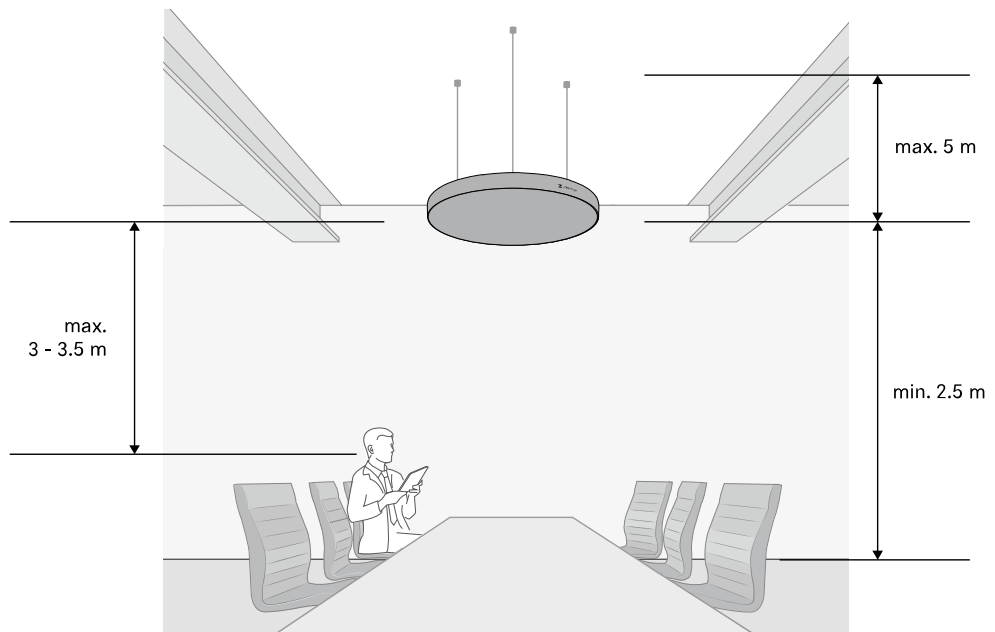
The minimum distance from the TeamConnect Ceiling Medium to the floor is 2.50 m.

- i** If installation variants 1 or 2 would result in a distance greater than the recommended maximum due to the room height, we recommend installation variant 3.

Recommended distances for variants 1 and 2:



Recommended distances for variant 3:





3. Installation and startup

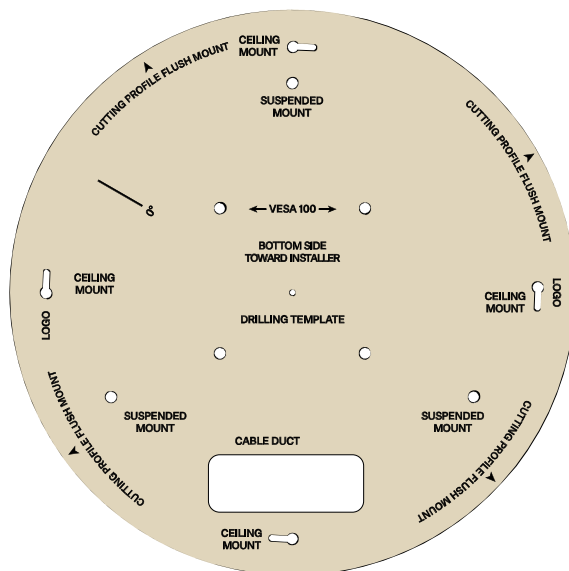
Instructional chapters on mounting and configuring the device.

i Contrary to the TeamConnect Ceiling 2, the TeamConnect Ceiling Medium is delivered with **muted microphones**. It is therefore necessary to configure the device in the Sennheiser Control Cockpit and unmute the microphones before using it for the first time (see [Configuring the TeamConnect Ceiling Medium with the Control Cockpit](#)).

1. Connect to the network
2. Download the Sennheiser Control Cockpit
3. Initialize the device in the Control Cockpit (default password is “sennheiser”)
4. Set a new password
5. Configure the device and unmute the microphones

General notes

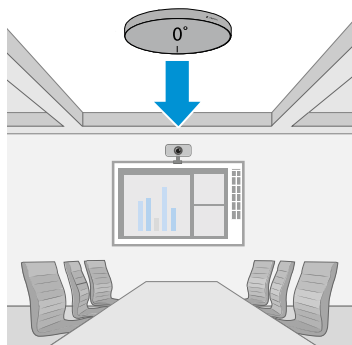
Drilling template



- ▶ Use the drilling template (item no. 594561) included with delivery to draw the drill holes and the circumference of the device.



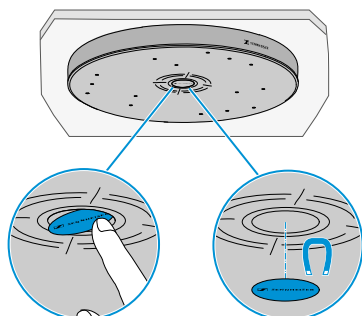
Camera orientation



- ▶ Make sure that the microphone is aligned before mounting. This is indicated by the "0°" mark.

Replacing the logo plate

If you want to replace the logo plate on the front of the microphone:



- ▶ Push the side of the plate so that it tilts out.
- ▶ Remove the plate from the housing.
- ▶ Insert the new plate. The magnet will hold it in place.



Variant 1: installed flush in a dropped/coffered ceiling

The TeamConnect Ceiling Medium can easily be installed flush in dropped or closed ceilings.

The TCC M-F product variant includes a ceiling flush mount kit for this purpose. When flush mounting, do not install the TeamConnect Ceiling Medium directly next to lights or other electrical devices in the ceiling.

NOTICE



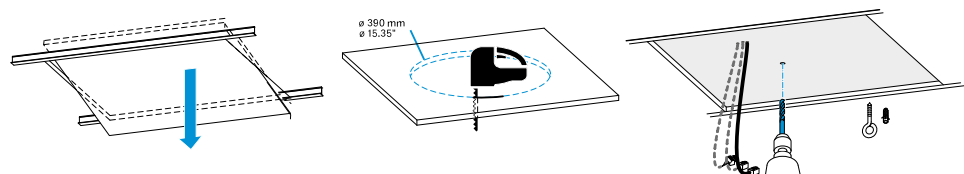
Danger of property damage if the product should fall

If mounted incorrectly, the product may fall.

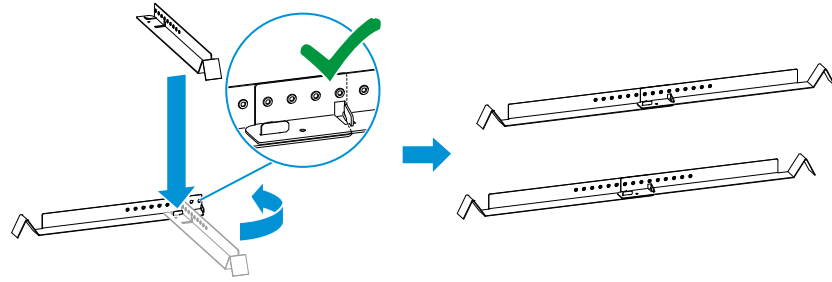
- ▶ When installing in the ceiling, always use additional means to secure the TeamConnect Ceiling Medium against falling, e.g. with the TCC M SK ceiling suspension kit included in the scope of delivery (see [Variant 4: suspended from the ceiling](#)) and **additionally** with the supplied installation rope, which is attached to a ceiling hook and the top of the microphone.

Attaching the ceiling flush mount kit

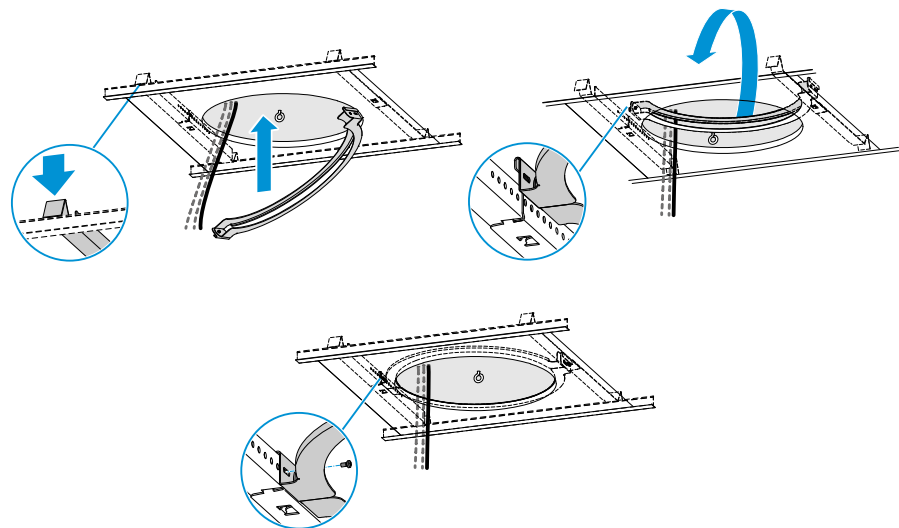
- ▶ Remove a tile from the ceiling.
- ▶ Trace the circumference using the drilling template supplied and saw the hole.
- ▶ Using a suitable anchor, insert an eye bolt into the ceiling to attach the installation rope.
- ▶ Reinsert the ceiling tile.



- ▶ Assemble the longitudinal sections of the ceiling flush mount kit by hooking them into each other at right angles and then straightening them out until they snap into place.



- ▶ Place the longitudinal sections over the crossbeams in the coffered ceiling.
- ▶ With the C-ring closed or slightly open, guide it through the hole and unfold it.
- ▶ Slide the tabs on the C-ring onto the longitudinal sections on both sides.
- ▶ Attach the ceiling flush mount kit by inserting the supplied screws through the slots on both sides.



Securing and connecting the microphone

- ▶ Fit the installation rope as shown and attach it to the retaining hook and microphone.
- ▶ Optionally, mount the TCC M SK ceiling suspension kit (see "[Variant 4: suspended from the ceiling](#)").
- ▶ Insert the cables you need.
- ▶ If required, you can attach a cover plate (included with delivery) and pipe clamps (not included with delivery).

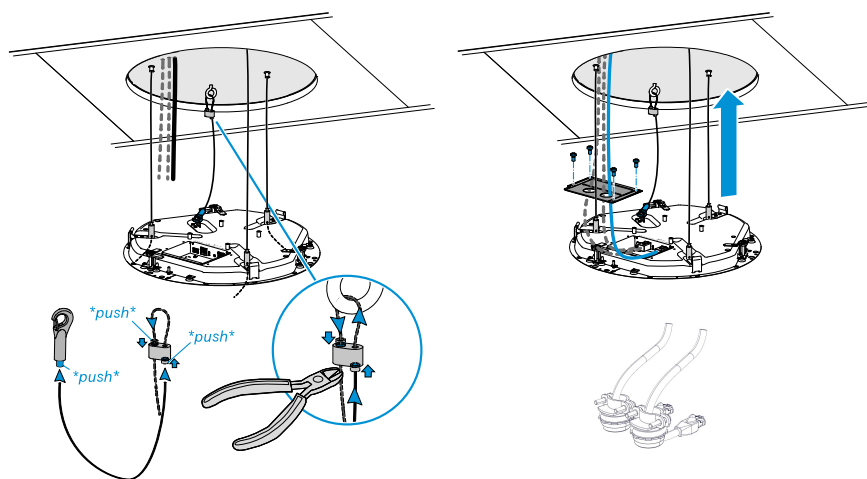


i Recommended cabling

Observe the following when connecting and running the cables:

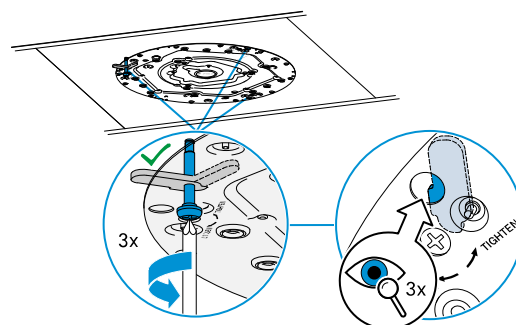
- Always run the cables carefully and in a loop shape inside the installation recess.
- Make sure not to kink the cables to avoid breaking them or damaging the plugs.

- ▶ Lift the microphone toward the ceiling, pull the rope tight and cut off any superfluous length of rope.

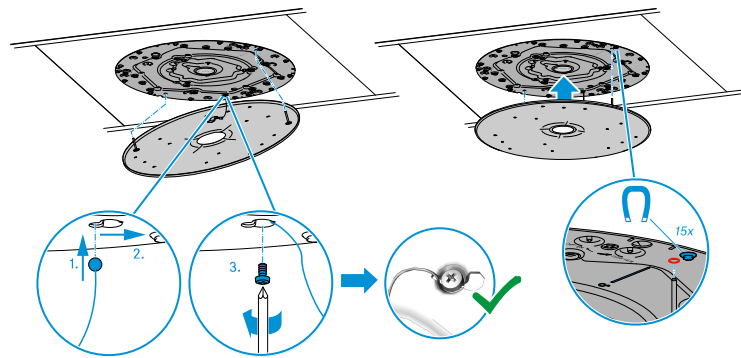


Securing the microphone and attaching the front panel

- ▶ Hold the microphone in the ceiling flush mount frame with one hand and use the other hand to screw the three clamps until tight.
- ▶ Look through the inspection holes to check that the clamps are properly tightened and the microphone is firmly seated in the frame.



- ▶ Insert the guy rope on the front panel into the corresponding recess in the microphone as shown and secure it with the supplied screw.



- ▶ Insert the two pins on the retaining plate into the corresponding holes in the microphone (marked in red). Magnets will hold the front panel to the microphone.



Variant 2: installed flush with Ceiling Tile Element in a dropped/coffered ceiling

The TeamConnect Ceiling Medium can be installed flush in closed ceilings with the Ceiling Tile Element without having to saw out an existing ceiling panel.

For this purpose, the TCC M CTFP-W or TCC M CT-W product variant is required. When flush mounting, do not install the TeamConnect Ceiling Medium directly next to lights or other electrical devices in the ceiling.

NOTICE



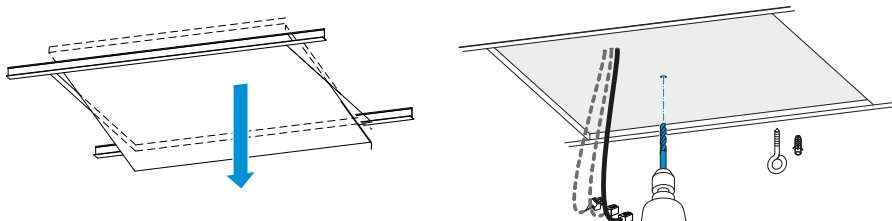
Danger of property damage if the product should fall

If mounted incorrectly, the product may fall.

- ▶ When installing in the ceiling, always use additional means to secure the TeamConnect Ceiling Medium against falling, e.g. with the TCC M SK ceiling suspension kit included in the scope of delivery (see [Variant 4: suspended from the ceiling](#)) and **additionally** with the supplied installation rope, which is attached to a ceiling hook and the top of the microphone.

Attaching the ceiling flush mount kit

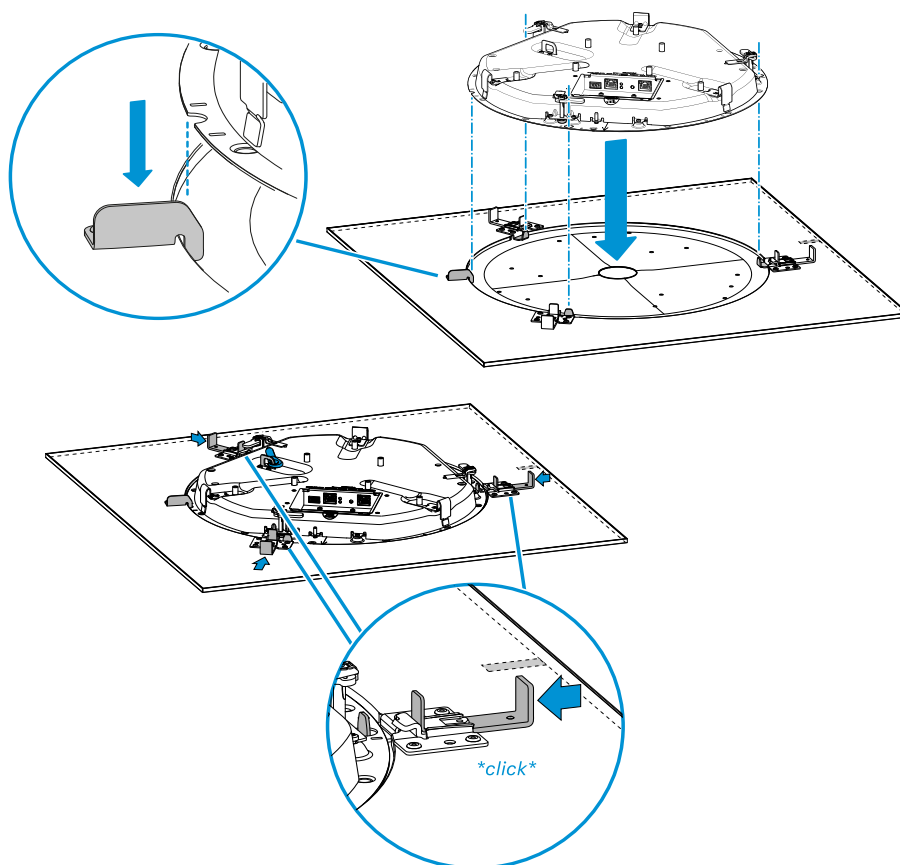
- ▶ Remove a tile from the ceiling.
- ▶ Using a suitable anchor, insert an eye bolt into the ceiling to attach the installation rope.



- ▶ Insert the microphone into the Ceiling Tile panel. In this context, only one position is possible: the metal lug of the panel must be inserted into the corresponding recess on the microphone, as shown in the illustration.



- ▶ The microphone must then be secured using the three latches on the panel. These must snap into place audibly with a "click".



Securing and connecting the microphone

- ▶ Fit the installation rope as shown and attach it to the housing and microphone.
- ▶ Mount the TCC M SK ceiling suspension kit (see [Variant 4: suspended from the ceiling](#)).
- ▶ Insert the cables you need.
- ▶ If required, you can attach a cover plate (not included with delivery) and pipe clamps (not included with delivery).

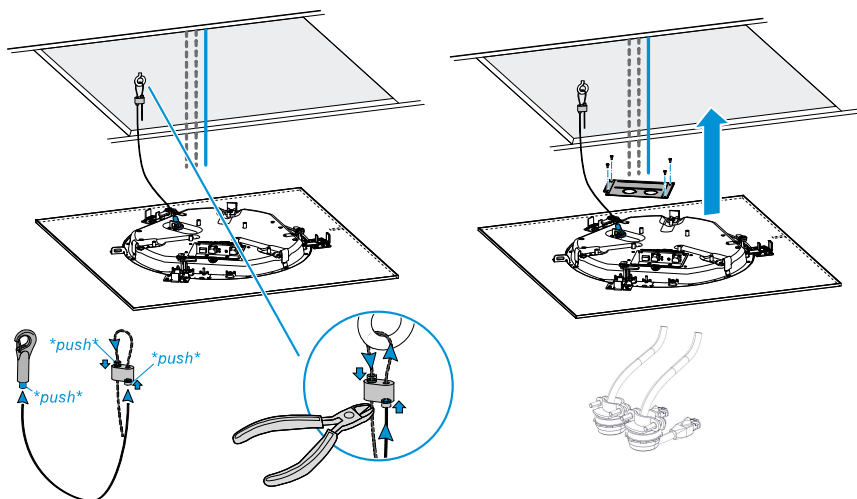
i Recommended cabling

Observe the following when connecting and running the cables:

- Always run the cables carefully and in a loop shape inside the installation recess.
- Make sure not to kink the cables to avoid breaking them or damaging the plugs.



- ▶ Lift the microphone toward the ceiling, pull the rope tight and cut off any superfluous length of rope.



Inserting the microphone

- ▶ Insert the microphone which is mounted in the Ceiling Tile into the ceiling.



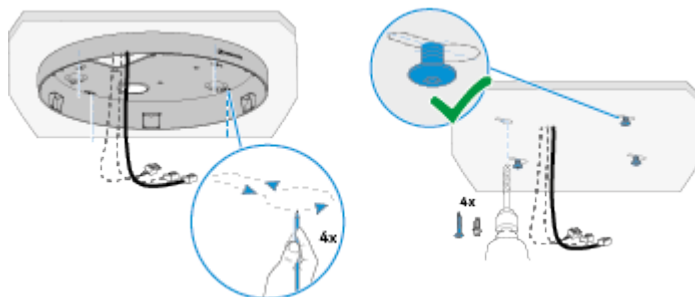
Variant 3: mounted directly below the ceiling

For installation directly below the ceiling, you need the TCC M-S-W or TCC M-S-B product variant, or the TCC M-H-W or TCC M-H-B ceiling microphone housing.

- i** Screws and anchors for mounting the product to the ceiling are not included with delivery. Use screws and anchors that are appropriate for the particular characteristics of your ceiling.

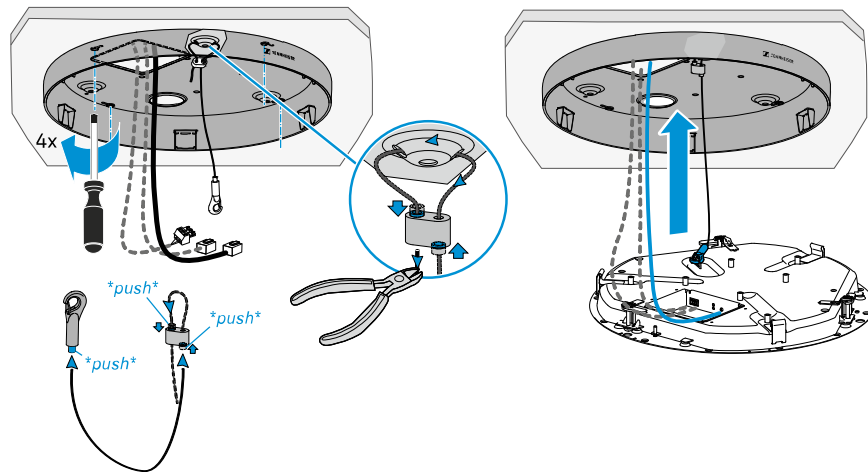
Mounting the ceiling mounting frame

- ▶ Use the drilling template or the housing to draw the keyholes on the ceiling.
- ▶ Place the screws in the center of the key holes.



Securing and connecting the microphone

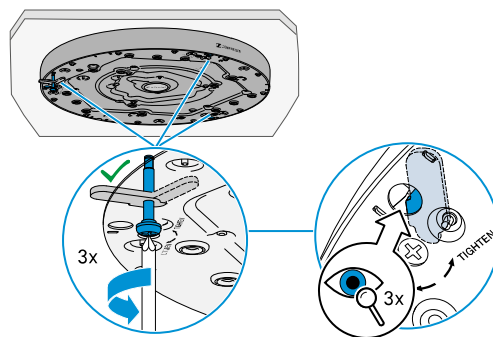
- ▶ Fit the installation rope as shown and attach it to the housing and microphone.
- ▶ Insert the cables you need.
- ▶ Lift the microphone toward the ceiling, pull the installation rope tight and cut off any superfluous length of rope.



- i** Observe the following when connecting and running the cables: Always run the cables carefully and in a loop shape inside the installation recess. Make sure not to kink the cables to avoid breaking them or damaging the plugs.

Securing the microphone and attaching the front panel

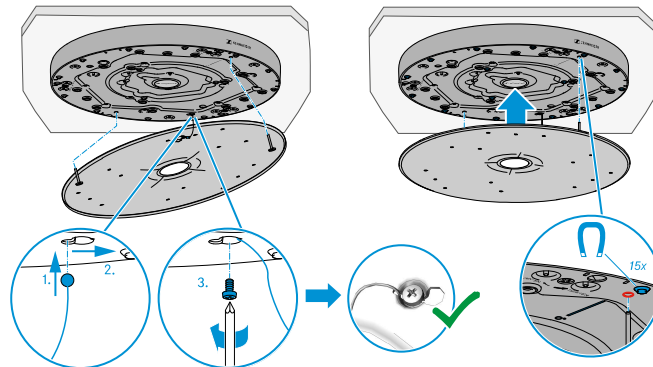
- ▶ Hold the microphone in the housing with one hand and use the other hand to screw the three clamps until tight. Caution: left-hand thread!
- ▶ Look through the inspection holes to check that the clamps are properly tightened and the microphone is firmly seated in the housing.



- ▶ Insert the guy rope on the front panel into the corresponding recess in the microphone as shown and secure it with the supplied screw.



- ▶ Insert the two pins on the retaining plate into the corresponding holes in the microphone (marked in red). Magnets will hold the front panel to the microphone.





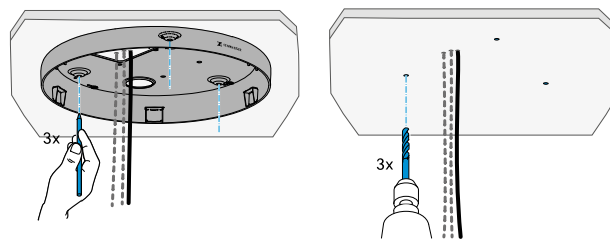
Variant 4: suspended from the ceiling

For suspended mounting, you need the TCC M-SK ceiling suspension kit.

- i** Screws and anchors for mounting the product to the ceiling are not included with delivery. Use screws and anchors that are appropriate for the particular characteristics of your ceiling.

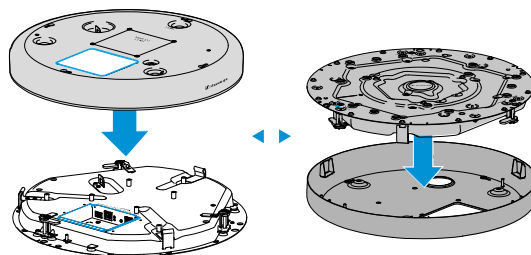
Drawing the drill holes

- ▶ Use the drilling template or the housing to draw the keyholes on the ceiling.

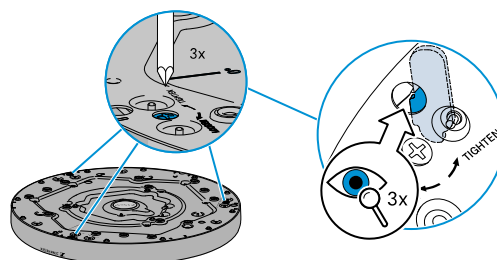


Premounting the microphone

- ▶ Insert the microphone into the housing or slide the housing onto the microphone.
- ▶ Make sure that the recess in the microphone is aligned with the corresponding hole in the housing.



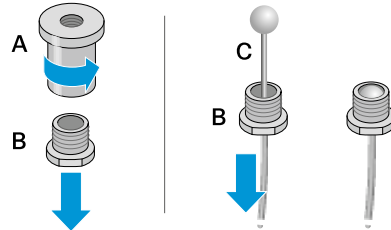
- ▶ Secure the microphone using the three clamps. Caution: left-hand thread!





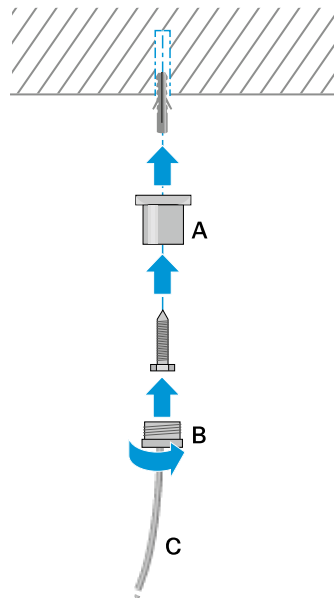
Preparing the ceiling fastener

- ▶ Unscrew part A of the ceiling fastener from part B.
- ▶ Thread the steel cable C into part B so that the ball on the steel cable is in part B.
- ▶ Repeat these steps for the other three fasteners.

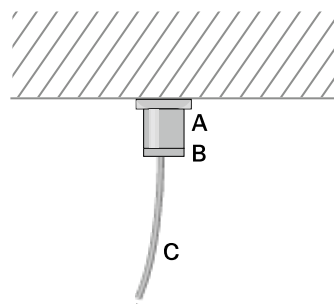


Mounting the ceiling fastener

- ▶ Attach part A of the ceiling fastener to the ceiling using a suitable anchor and screw.
- ▶ Use the included drilling template to align the drill holes.



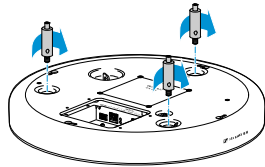
- ▶ Then screw part B of the ceiling fastener into part A.
- ▶ Repeat these steps for the other three fasteners.



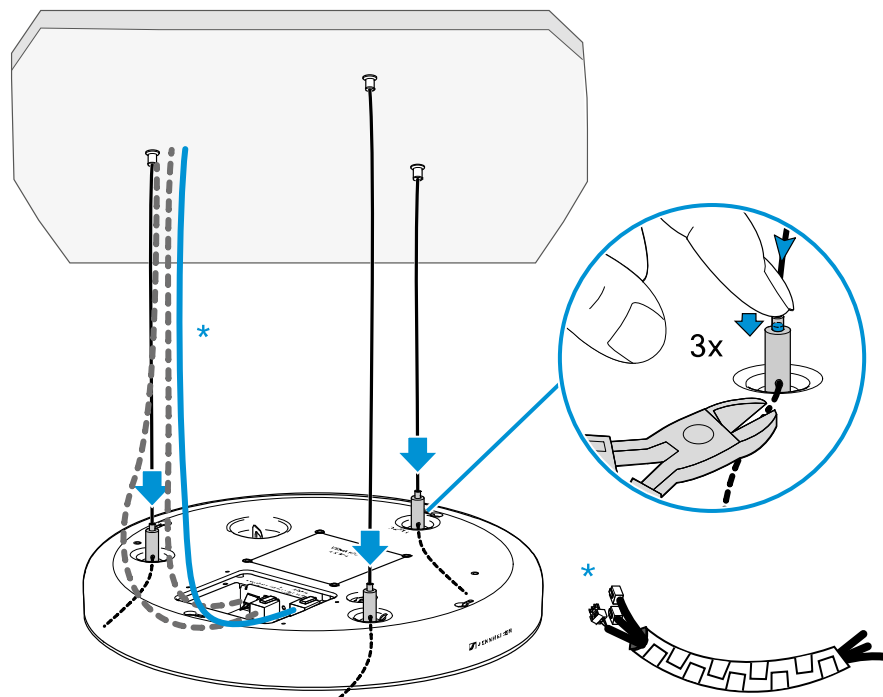


Mounting the product fastener

- ▶ As shown in the figure, screw the product fastener into the threaded mounting hole on the top of the TeamConnect Ceiling Medium.



- ▶ Set the steel cable C to the desired length by using your finger to press the cable guide into the product fastener and sliding the steel cable as needed.

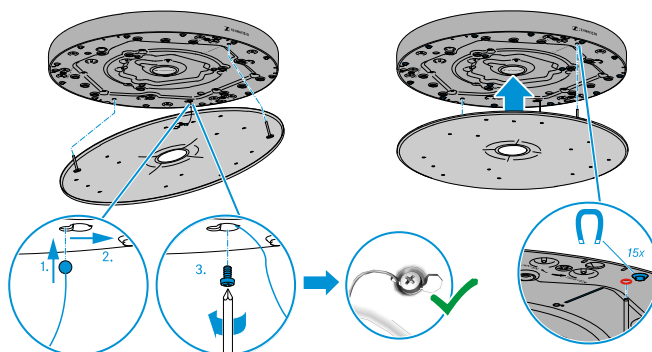


- ▶ Cut the excess steel cable using suitable pliers.
- ▶ Repeat these steps for the other three fasteners.
- ▶ Insert the cables you need.
- ▶ If necessary, use a cable conduit (not included with delivery) to bundle the cables.



Attaching the front panel

- ▶ Insert the guy rope on the front panel into the corresponding recess in the microphone as shown and secure it with the supplied screw.
- ▶ Insert the two pins on the retaining plate into the corresponding holes in the microphone (marked in red). Magnets will hold the front panel to the microphone.

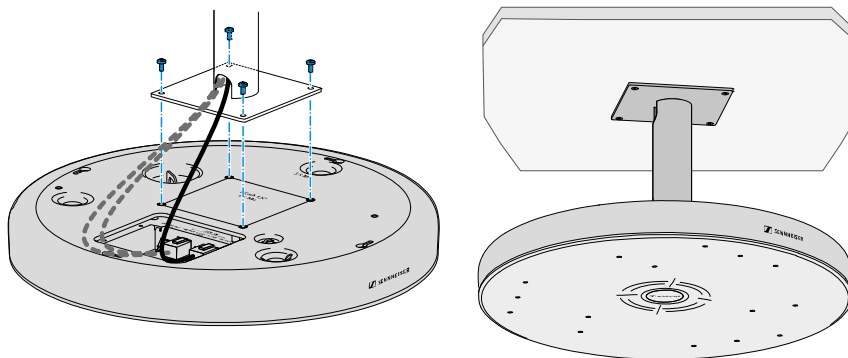




Mounting the TeamConnect Ceiling Medium on a VESA mount

The TeamConnect Ceiling Medium can be mounted on standard VESA MIS D mounts.

- ▶ Fasten the ceiling mount to the ceiling using suitable screws and anchors.
- ▶ Observe the mounting specifications from the manufacturer.
- ▶ Then mount the TeamConnect Ceiling Medium on the VESA mount (M4 × 0.7 × 10 mm) as shown in the figure.





Configuring the TeamConnect Ceiling Medium with the Sennheiser Control Cockpit

i Contrary to the TeamConnect Ceiling 2, the TeamConnect Ceiling Medium is delivered with **muted microphones**. It is therefore necessary to configure the device in the Sennheiser Control Cockpit and unmute the microphones before using it for the first time (see [Configuring the TeamConnect Ceiling Medium with the Control Cockpit](#)).

1. Connect to the network
2. Download the Sennheiser Control Cockpit
3. Initialize the device in the Control Cockpit (default password is “sennheiser”)
4. Set a new password
5. Configure the device and unmute the microphones

Downloading Sennheiser Control Cockpit

i To use the Sennheiser Control Cockpit, you must complete a one-time registration with your e-mail address to receive the software activation code.

- ▶ To configure and use the TeamConnect Ceiling Medium, you need the free Sennheiser Control Cockpit control software. You can download it here: sennheiser.com/control-cockpit
- ▶ The Sennheiser Control Cockpit must be used to configure/initialize the product for the first time.
- ▶ After that, the TeamConnect Ceiling Medium can also be operated using a media control system. To have access to the full range of functions, however, you should use the Sennheiser Control Cockpit.



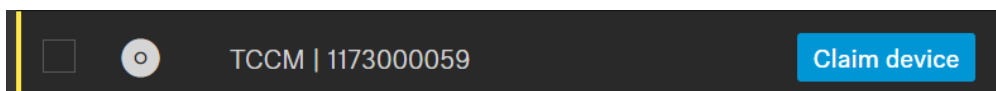
Claiming the TeamConnect Ceiling Medium for a specific Control Cockpit instance (network solution)

i To set up the device's initial configuration, you have to connect directly to the network via the LAN cable (RJ45).

- ▶ A new device claiming feature has been introduced to link the device to a specific instance of Control Cockpit and thus prevent the device from being controlled over the network without authentication. The device is controlled by means of encrypted communication and only with the password you have set.
- ▶ To assign the TCC M to a Control Cockpit instance: Connect the device's "Control" network port (PoE+ socket) to the network:

i Use only network cables with CAT5e (F/STP) standard or better.

- ▶ Open Control Cockpit and click on the "Device list" view.
 - ✔ The new device is automatically detected and displayed as "Not claimed." If the device does not appear in the device list, add the device manually by entering an IP address.



i Please note that the device must be claimed before its full range of functions are available.

- ▶ Click "Claim device" and enter the default password "sennheiser".



- i** If the device has been previously claimed by another instance of Control Cockpit, enter the password set previously.
If you do not remember the previous password, please perform a hardware reset of the device and try again with the default password.
To ensure secure access to the device, you will immediately be prompted to enter a new password.

- ▶ Enter the new password for your device and click "Set password". The device has now been claimed by your Control Cockpit instance. You can now use all available functions.

- i** Please note that the new password must meet the following requirements:
- At least ten characters
 - At least one uppercase letter
 - At least one lowercase letter
 - At least one number
 - At least one special character
 - Maximum length: 64 characters

You can change the device password on the "Access" tab of the device page.

You can also install a new instance of Control Cockpit and claim the device by entering the set device password.



Configuring the TeamConnect Ceiling Medium with the Sennheiser Control Cockpit

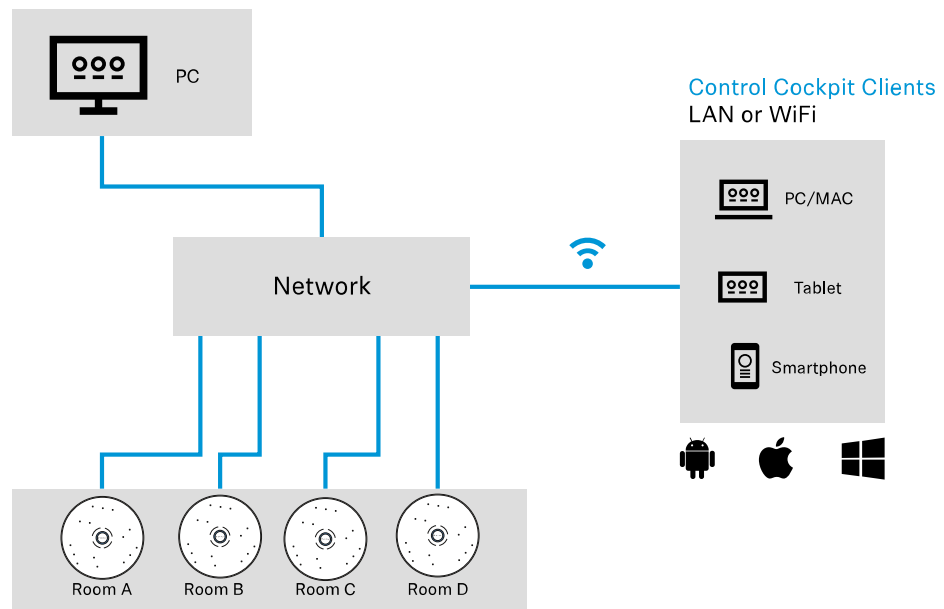
- i** There are two ways to operate the TeamConnect Ceiling Medium using the Sennheiser Control Cockpit:
- Variant 1: integrated in an existing network
 - Variant 2: as a standalone solution with a PC and a PoE-capable network switch

▶ **Variant 1 – Integrating the TeamConnect Ceiling Medium in an existing network**

The Sennheiser Control Cockpit should be installed on a host PC (Windows 7 or later) that is in the same network as the TeamConnect Ceiling Medium that you want to configure. The Sennheiser Control Cockpit runs on the host PC as a Windows service.

- ▶ Any browser-capable device in the network (e.g. PC/Mac, tablet or smartphone) can operate the product using the Control Cockpit Client, which is accessed at a specific URL in the browser.

Host PC: Control Cockpit Server
LAN



TeamConnect Ceiling Medium
LAN

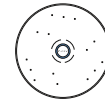
- i** The online help contains detailed information about the functions of the Sennheiser Control Cockpit and how to configure the TeamConnect Ceiling Medium and the network. The online help can be found on the Sennheiser Control Cockpit product page (sennheiser.com/control-cockpit) and in the software itself.



- ▶ **Variant 2 – Connecting the TeamConnect Ceiling Medium to a PC and a PoE-capable network switch for standalone use:** To configure the TeamConnect Ceiling Medium using a computer without integrating it in a network, connect the computer to a PoE-capable network switch using a network cable (Cat5e or higher). Alternatively, you can use a PoE injector.
- ▶ Connect the network switch to the Ethernet PoE/Ctrl socket on the TeamConnect Ceiling Medium.

Host PC: Control Cockpit server
and Control Cockpit client

TeamConnect Ceiling Medium



PoE injector

PoE IEEE 802.3af Class 3 or
PoE IEEE 802.3at / Type 2 /
Class 4 (when cascaded)



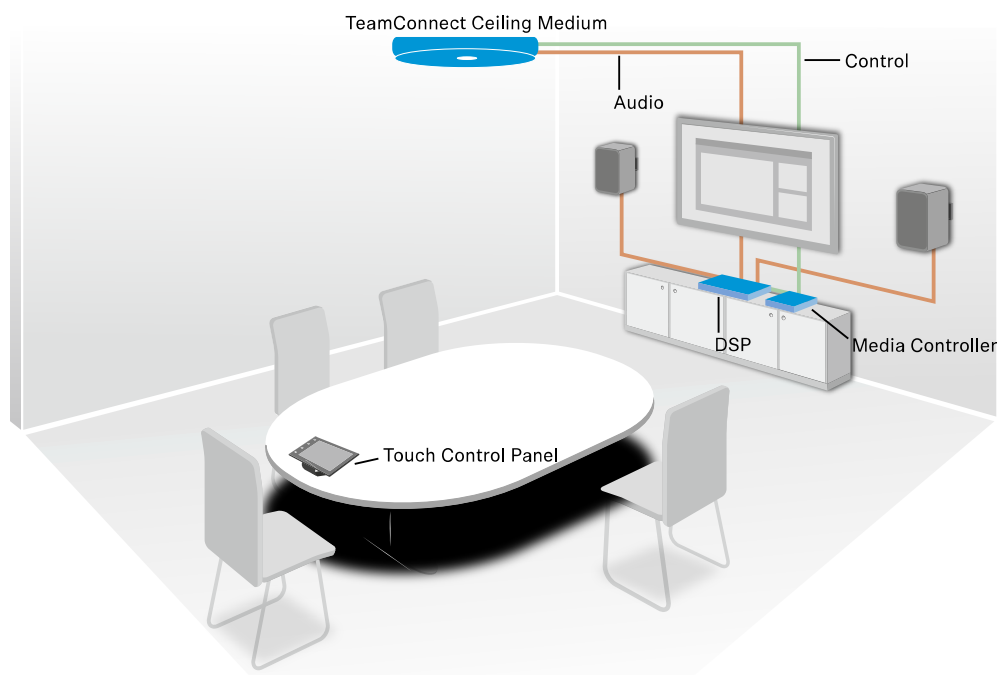
Configuring the TeamConnect Ceiling Medium with a media control system

After initial configuration with the Sennheiser Control Cockpit, the TeamConnect Ceiling Medium can also be operated using a media control system.

A media control system allows you to use a custom user interface with the following functions:

- Control the mute function
- Edit audio parameters (adjust output level, show microphone level, set EQ)
- LED control
- Transmit speaker position

Sample application:



i The media control protocol for TeamConnect Ceiling Medium is available for download as a PDF file on the product web page: sennheiser.com/teamconnect-ceiling-medium



4. Specifications

Product characteristics and acoustic properties, ambient conditions, polar diagram and frequency response curve.

Specifications

Product properties

Dimensions (Ø×H)

- 407 × 46 mm
- 590.8 mm × 590.8 mm × 45.8 mm (Ceiling Tile)
- 606.5 mm × 606.5 mm × 45.8 mm (Ceiling Tile 2ft)

Weight

- 4.9 kg max.
- 4.5 kg (Ceiling Tile)
- 4.6 kg (Ceiling Tile 2ft)

Audio outputs

- 1 × 3-pin connection socket (suitable for Phoenix Contact MCVW 1.5-3-ST-3.81)
- 1 × digital Dante network audio (RJ-45)

Network/Control

- 1 × RJ-45 Ethernet socket for PoE power supply and data/control

Supply voltage

- PoE IEEE 802.3af Class 3 or PoE IEEE 802.3at / Type 2 / Class 4 (if cascaded)

Power consumption

- approx. 8 W

Security certification

- IEC/EN 62368-1 (including UL 2043 verification and compliance)

Acoustic properties

Transducer principle

- Pre-polarized condenser microphone



AF frequency response

- 100 Hz - 16,000 Hz

Sensitivity

- 0 dBV/Pa (1020 mV/Pa)

Signal-to-noise ratio

- 77 dB(A)

Equivalent noise level

- 17 dB(A)

Number of KE 10 microphone capsules

- 15

Pick-up pattern

- Beam pattern

Max. sound pressure level

- 98 dB SPL

Dynamic range

- 81 dB(A)

Ambient conditions

Temperature range

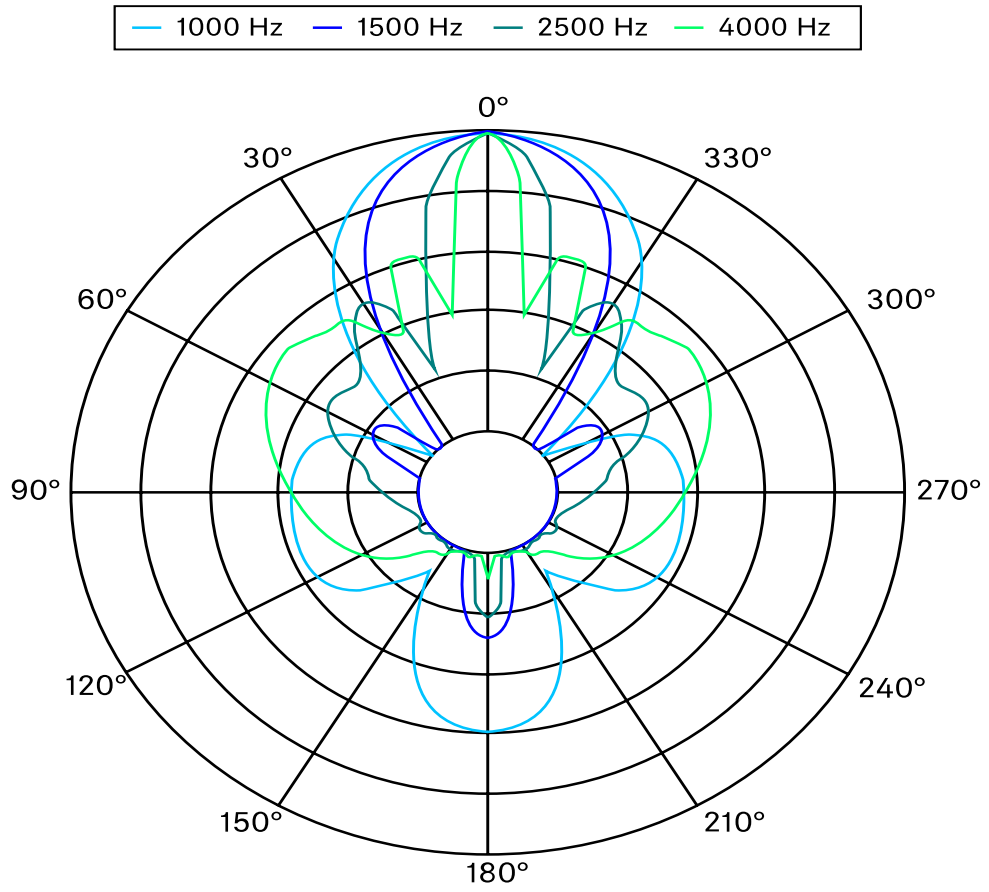
- Operation: 0 to 40 °C (32 °F to 122 °F)
- Storage: -10 to 60 °C (32 °F to 122 °F)

Relative humidity

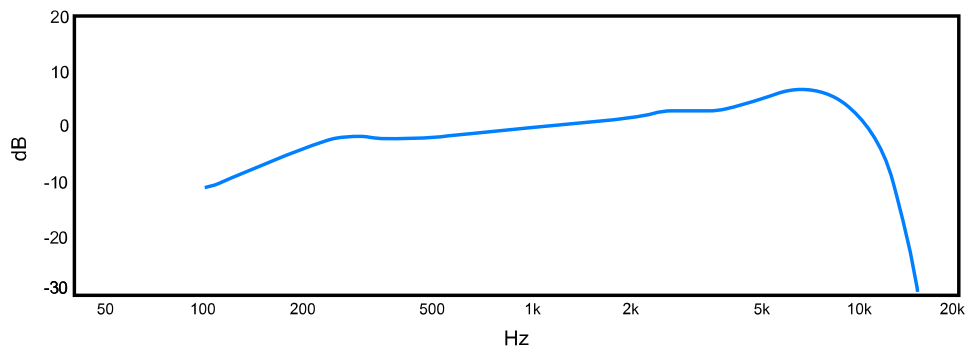
- 20-95 %, non-condensing



Polar diagram



Frequency response





Cleaning and maintenance

NOTICE



Liquids can damage the electronics of the product

Liquids entering the product housing can cause a short-circuit and damage the electronics.

- ▶ Keep all liquids away from the products.
- ▶ Do not use any solvents or cleansing agents.
- ▶ Disconnect the products from the power supply system and remove rechargeable batteries and batteries before you begin cleaning.
- ▶ Clean all products only with a soft, dry cloth.

1. Disconnect the products from the power supply before you begin cleaning.
2. Clean all products only with a soft, dry cloth.



5. Regulatory information

Information on manufacturer declarations, environmental and disposal notices, and terms of use.

Model: TCC M

Warranty

Sennheiser electronic SE & Co. KG gives a warranty of 24 months on these products.

For the current warranty conditions, please visit our website at sennheiser.com or contact your Sennheiser partner.

In the US please contact:

Sennheiser Electronic Corporation

1 Enterprise Drive, Old Lyme, CT 06371

www.sennheiser.com

Warranty for Australia and New Zealand only

Sennheiser Australia Pty Ltd provides a warranty of 24 months on these products. For the current warranty conditions, visit Sennheiser website: Australia: sennheiser.com, New Zealand: sennheiser.com

Sennheiser goods come with guarantees that cannot be excluded under Australian and New Zealand Consumer law. You are entitled to a replacement or refund for a major failure and compensation for any other reasonably foreseeable loss or damage. You are also entitled to have the goods repaired or replaced if the goods fail to be of acceptable quality and the failure does not amount to a major failure.

This warranty is in addition to other rights or remedies under law. Nothing in this warranty excludes, limits or modifies any remedy available to be consumer which is granted by law.

To make a claim under this contract, raise a case via Sennheiser website. Australia: sennheiser.com/support, New Zealand: sennheiser.com/support

All expenses of claiming the warranty will be borne by the person making the claim.

Sennheiser international warranty is provided by: Sennheiser Australia Pty Ltd (ABN 68 165 388 312) Level 14, Tower A Zenith Building, 821 Pacific Highway, Chatswood NSW 2067, Australia

Europe





In compliance with the following requirements

- Regulation (EU) 2023/988 on general product safety
- WEEE Directive (2012/19/EU)

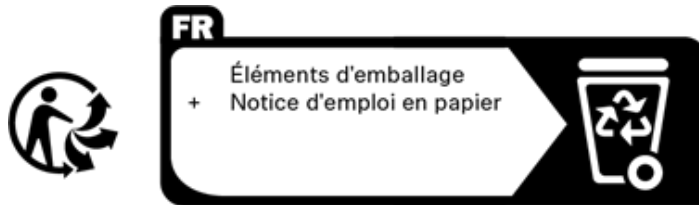


Italy:

Raccolta carta



France:



Notes on disposal

The symbol of the crossed-out dumpster on the product, the (rechargeable) battery (if applicable) and/or the packaging indicates that these products must not be disposed of with normal household waste, but must be disposed of separately at the end of their service life. For the packaging, follow the regulations in your country for separating waste. Improper disposal of packaging materials can be harmful to your health and the environment.

The separate collection of waste electrical and electronic equipment, (rechargeable) batteries (if applicable) and packaging is intended to promote reuse and recycling and to prevent negative impacts on public health and the environment, for example due to hazardous substances contained in these products. At the end of their service life, recycle electrical and electronic equipment and (rechargeable) batteries so that their materials can be reused and to prevent environmental pollution.

If (rechargeable) batteries can be removed without destroying them, you are obliged to dispose of them separately (see the product's operating instructions for information on how to remove the batteries safely). Be especially careful when handling (rechargeable) batteries containing lithium, as these pose special hazards, such as the risk of fire and/or health risks if button cells are swallowed. Reduce battery waste as much as possible by using longer-life batteries or rechargeable batteries.

Further information on the recycling of these products can be obtained from your municipal administration, from the municipal collection points, or from your Sennheiser partner. You may also be able to return electrical or electronic equipment to your distributor, if they are legally required to do so. By disposing of your batteries properly, you are helping to protect public health and the environment.



EU Declaration of conformity

- RoHS Directive (2011/65/EU)
- EMC Directive (2014/30/EU)

The full text of the EU declaration of conformity is available at the following internet address:
sennheiser.com/download.

United Kingdom



In compliance with the following requirements

- WEEE Regulations (2013)



UK Declaration of conformity

- RoHS Regulations (2012)
- EMC Regulations (2016)

Importer: Sennheiser UK Ltd.

Pacific House, Third Avenue, Globe Park, Marlow

Buckinghamshire SL7 1EY, United Kingdom

USA

Statements regarding FCC and ISSED

This device complies with part 15 of the FCC rules. Operation is subject to the following two conditions: (1) this device may not cause harmful interference, and (2) this device must accept any interference received, including interference that may cause undesired operation.

Contact information: Sennheiser Electronic Corporation, 1 Enterprise Drive, Old Lyme, CT 06371; sennheiser.com





Australia / New Zealand



China

China RoHS

部件名称 (Parts)	有害物质										
	铅 (Pb)	汞 (Hg)	镉 (Cd)	六价铬 (Cr6+)	多溴联苯 (PBB)	多溴二苯醚 (PBDE)	邻苯二甲酸二 (2-乙基己)酯 (DEHP)	邻苯二甲 酸丁苯酯 (BBP)	邻苯二甲 酸二丁酯 (DBP)	邻苯二甲 酸二异丁酯 (DIBP)	产品环保年限 EFUP
金属部件 (Metal parts)	x	o	o	o	o	o	o	o	o	o	15
电路模块 (Circuit Modules)	x	o	o	o	o	o	o	o	o	o	15

本表格依据 SJ/T 11364 的规定编制。
o: 表示该有害物质在该部件所有均质材料中的含量均在 GB/T 26572 规定的限量要求以下。
x: 表示该有害物质至少在该部件的某一均质材料中的含量超出 GB/T 26572 规定的限量要求。

Mexico



South Korea



R-R-SE9-TCCM

Vietnam

Kể từ ngày 1 tháng 12 năm 2012, các sản phẩm được sản xuất bởi Sennheiser tuân thủ Thông tư 30/2011/TT-BCT quy định về giới hạn cho phép đối với một số chất độc hại trong các sản phẩm điện và điện tử.

Trademark

Audinate®, Dante®

Audinate® is a registered trademark of Audinate Pty Ltd. Dante® is a registered trademark of Audinate Pty Ltd.



6. Contact

Contact information in case of questions about our products and/or services.



